



Beacon™

Dunn County, WI



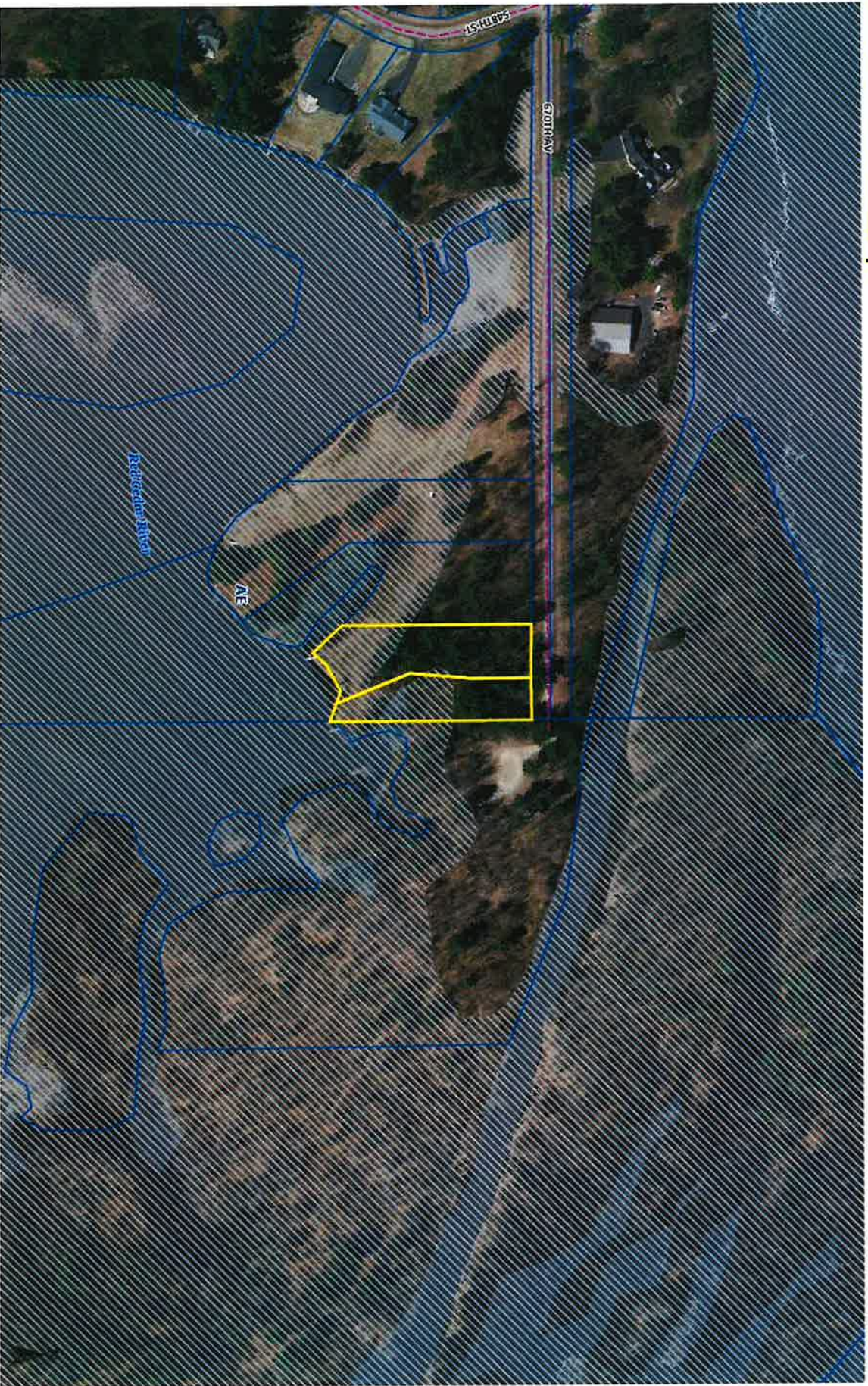




**Beacon**<sup>TM</sup>

Dunn County, WI

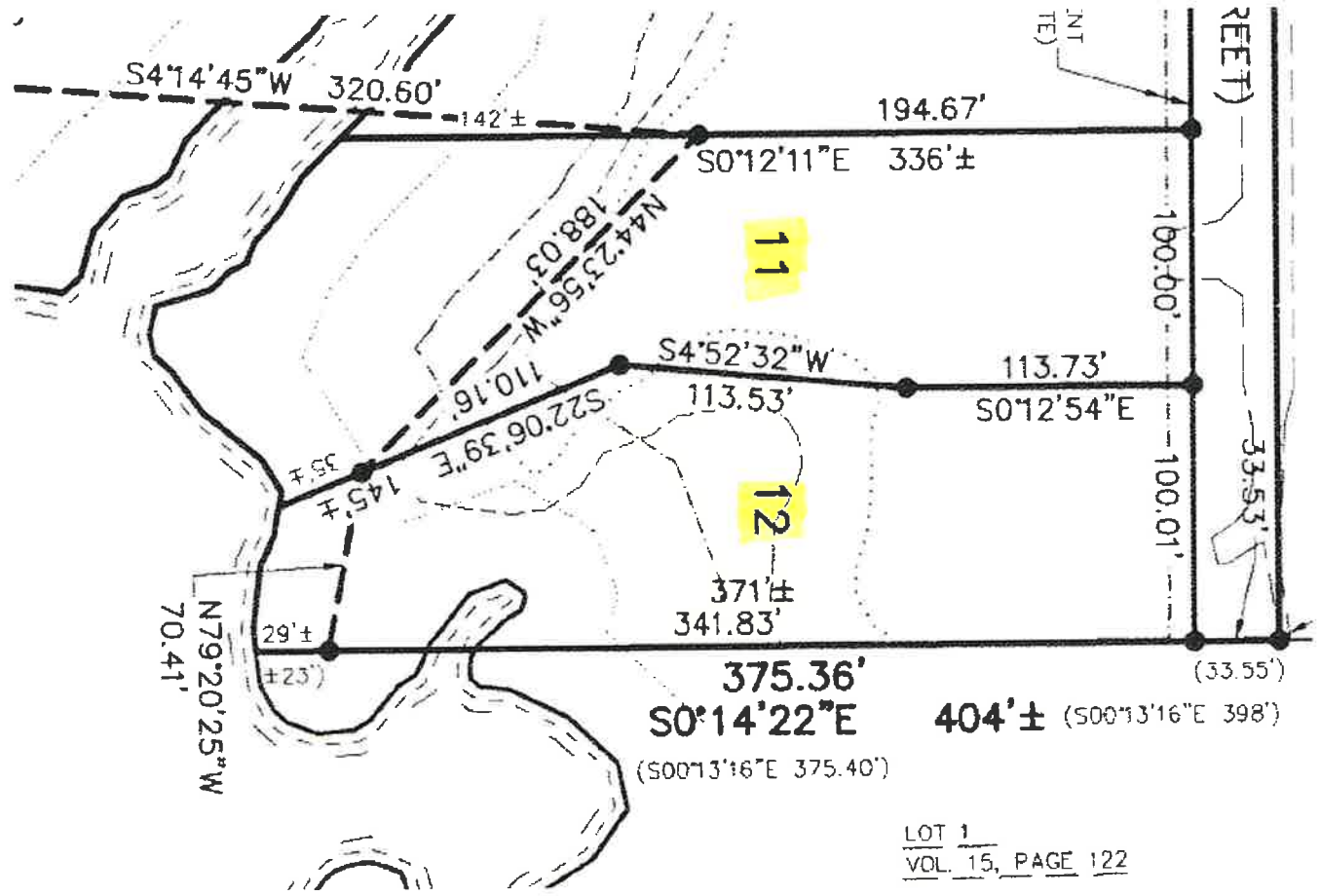
**Flood Plain Map**



Created by: null



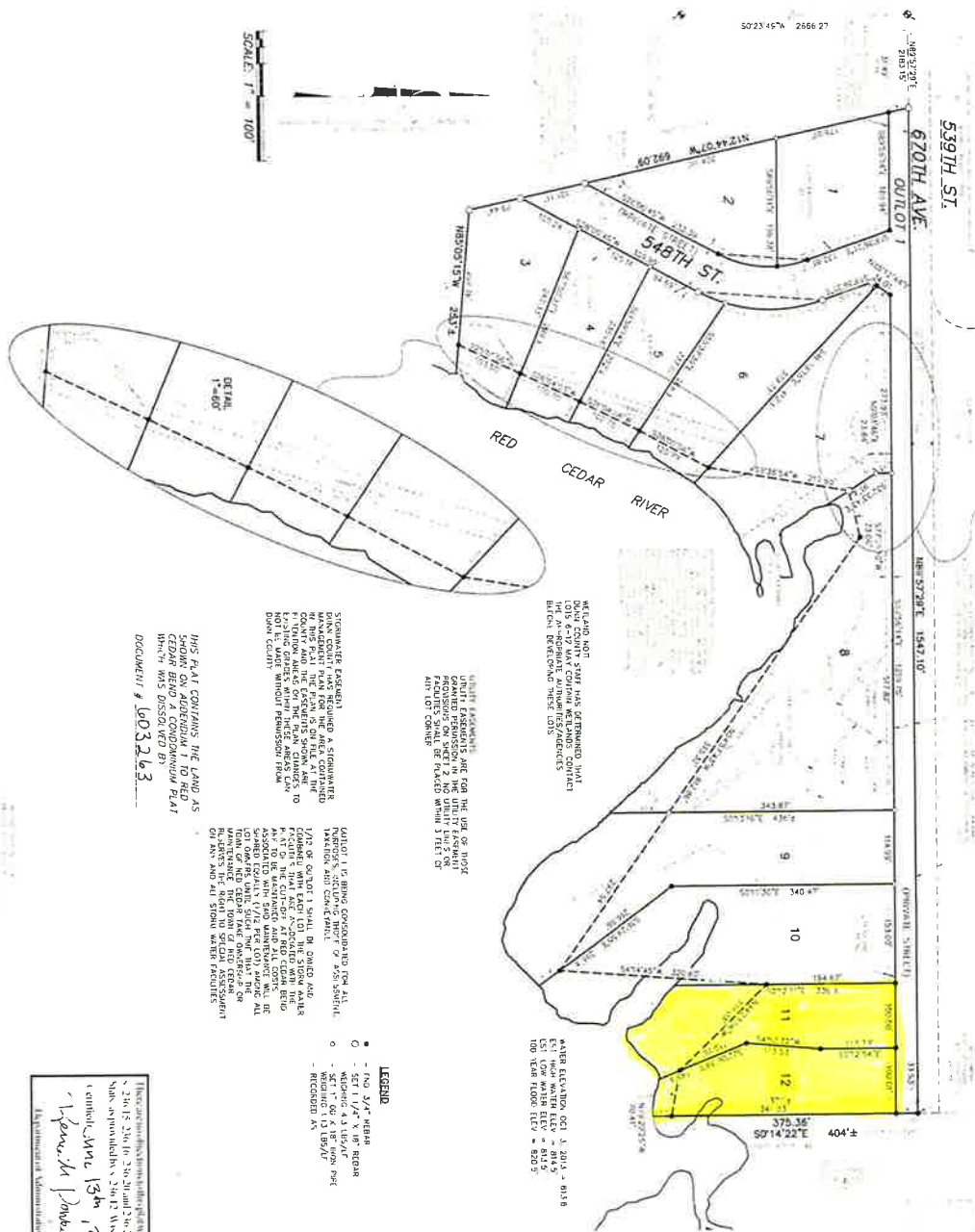
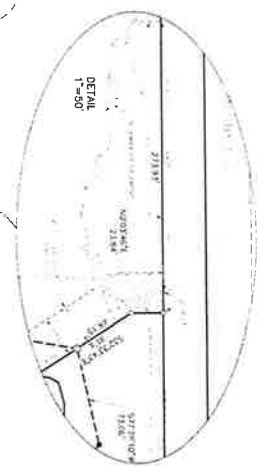




LOT 1  
VOL. 15, PAGE 122



DOCUMENT NUMBER **603264**  
 REC'D **May 1, 2014** **FEB 20**  
 VOLUME **9** OF PLATS PAGE **13**  
*Heather Kubi*  
 HEATHER KUBI



WE AND NOT DAVIS COUNTY HAVE DETERMINED THAT THE APPLICABLE NUMBERS/ADDRESSES FOR BLDG RELATION THESE LOTS

THESE PROVISIONS GRANTED PERMITS ARE FOR THE USE OF MORE FACILITIES SMALLER THAN THOSE WHICH WOULD BE PLACED WITHIN 1 FEET OF ANY LOT CORNER

AVENUE ELEVATION OCT 3, 2013 = 815.8  
 LOT 10 WATER ELEV = 815.5  
 100 YEAR FLOOD ELEV = 820.5

DUNN COUNTY PLANNING, RESOURCES AND DEVELOPMENT COMMITTEE  
 HAS REVIEWED THE PLAT AND FINDS IT TO BE IN ACCORDANCE WITH THE ZONING ORDINANCE AND DEVELOPMENT CODE OF THE COUNTY AND HAS RECOMMENDED APPROVAL OF THE PLAT.  
 APPROVED: *[Signature]*  
 PLANNING, RESOURCES AND DEVELOPMENT COMMITTEE  
 DATE: **July 8, 2014**



THIS PLAT CONTAINS THE LAND AS SHOWN ON THE PLAT TO BE A CONDOMINIUM PLAT WHICH WAS DISCLOSED BY DOCUMENT # **603263**

PREPARED BY: REX LAND SURVEYING

Heather Kubi  
 Licensed Professional Land Surveyor  
 No. 23615, Exp. 12/31/2014  
 State of Wisconsin  
 13th, 2014  
*Heather Kubi*  
 Department of Commerce, Division 3



**THE CUT-OFF**  
**AT RED CEDAR BEND**

IN GOVT. LOT 11, SECTION 7, T29N, R12W,  
 TOWN OF RED CEDAR, DUNN COUNTY, WISCONSIN  
 BEING 24.6 ACRES, S. 7. E. 2. 500.00 SQ. FT.

