

HEIGHTS ADDITION

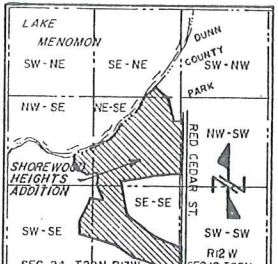
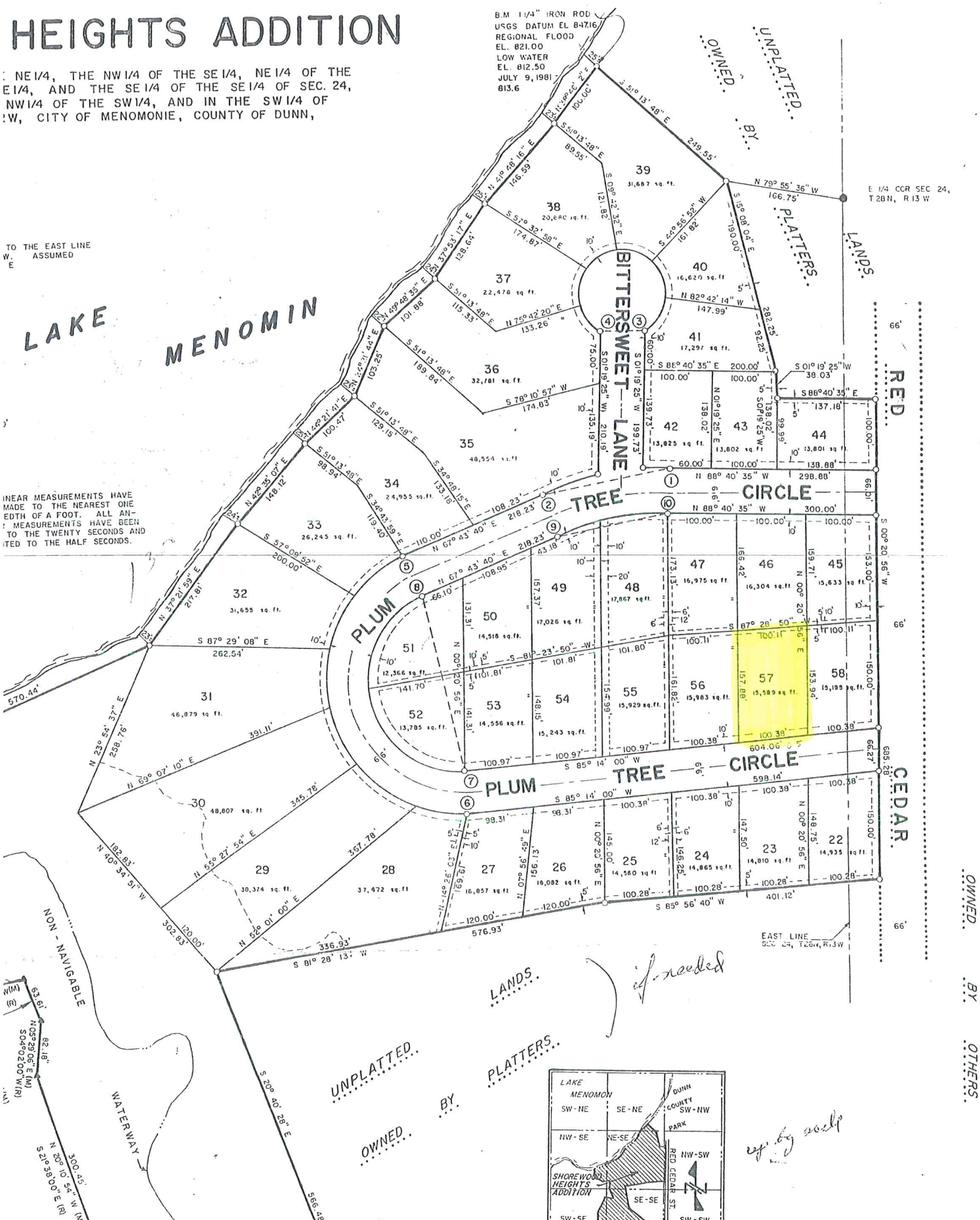
NE 1/4, THE NW 1/4 OF THE SE 1/4, NE 1/4 OF THE E 1/4, AND THE SE 1/4 OF THE SE 1/4 OF SEC. 24, NW 1/4 OF THE SW 1/4, AND IN THE SW 1/4 OF SEC. 25, CITY OF MENOMONIE, COUNTY OF DUNN,

B.M. 1/4" IRON ROD
USGS DATUM EL. 84716
REGIONAL FLOOD
EL. 821.00
LOW WATER
EL. 812.50
JULY 9, 1981
813.6

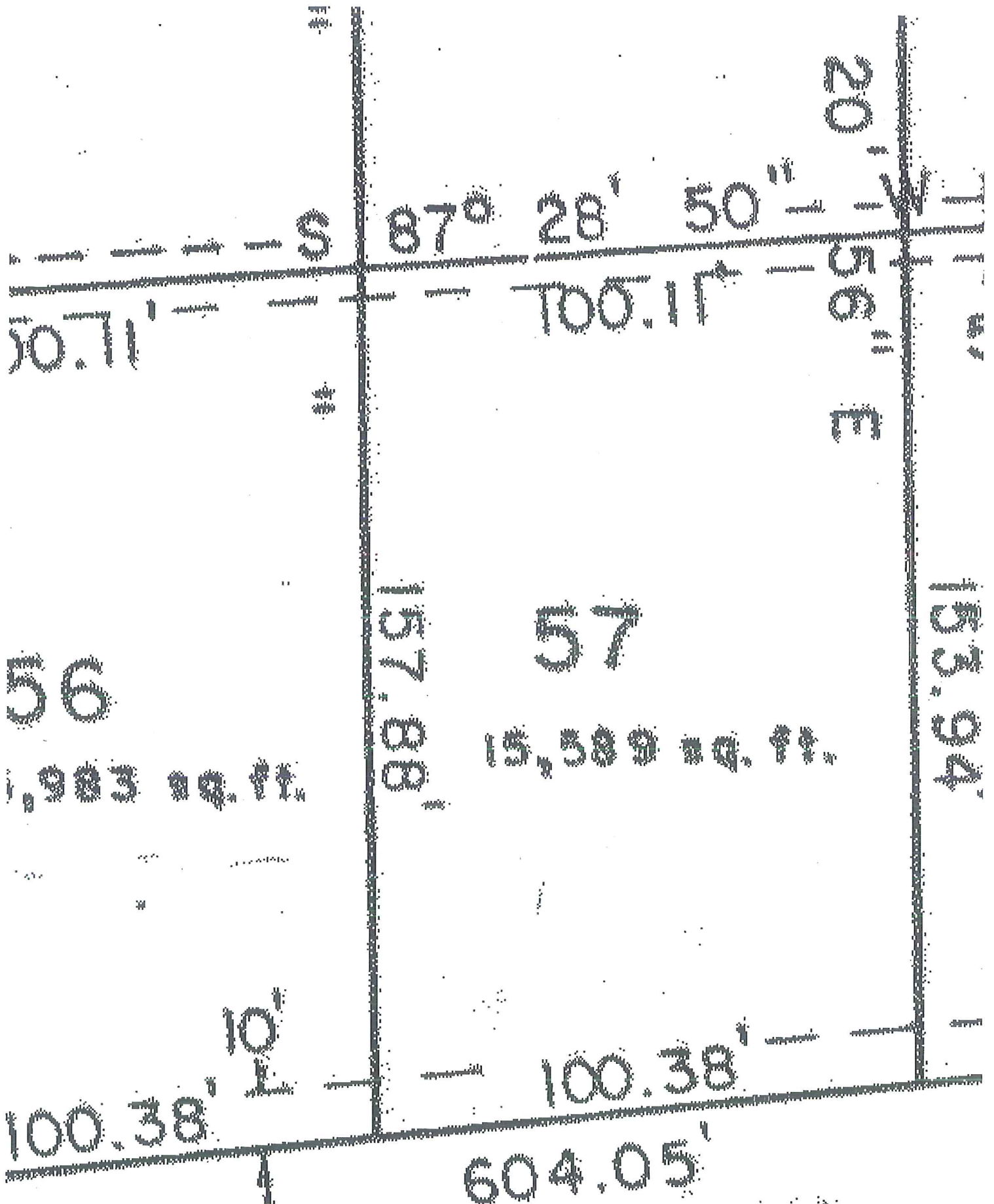
TO THE EAST LINE
W. ASSUMED
E

LAKE
MENOMIN

LINEAR MEASUREMENTS HAVE
MADE TO THE NEAREST ONE
EDTH OF A FOOT. ALL AN-
MEASUREMENTS HAVE BEEN
TO THE TWENTY SECONDS AND
TED TO THE HALF SECONDS.



copy by 2024



56

1,983 sq. ft.

157.88'

57

15,389 sq. ft.

153.94'

100.38'

10'

100.38'

604.05'

9 21001 F