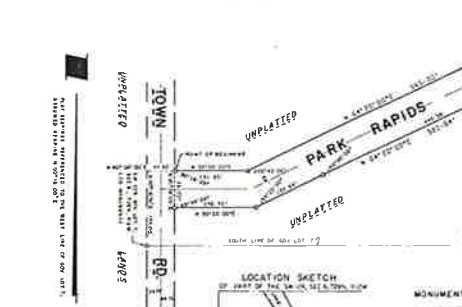


CURVE NO.	LOT NO.	RADIUS LENGTH	CHORD LENGTH	ARC LENGTH	CHORD BEARING	CENTRAL ANGLE	TANGENT BEARING
1-2	1	144.32	254.95	311.70	N 28°07'30" 0"E	123°45'00"	S 90°00'00" 0"E
3-4	2	144.32	173.71	186.40	N 51°58'56" 0"E	74°00'00"	N 33°45'00" 0"E
5-6	3	144.32	110.41	113.30	N 08°29'36" 0"E	44°58'56"	N 74°40'00" 0"E
7-8	4	144.32	66.58	66.83	N 29°51'53" 0"E	07°40'14"	N 84°20'00" 0"E
9-10	5	144.32	42.35	43.47	N 07°00'00" 0"E	59°23'44"	N 19°14'24" 0"E
11-12	6	144.32	25.49	26.04	N 05°51'58" 0"E	17°56'00"	N 15°44'00" 0"E
13-14	7	144.32	15.89	16.11	N 05°51'58" 0"E	17°56'00"	N 15°44'00" 0"E
15-16	8	144.32	9.89	10.00	N 05°51'58" 0"E	17°56'00"	N 15°44'00" 0"E
17-18	9	144.32	6.00	6.00	N 05°51'58" 0"E	17°56'00"	N 15°44'00" 0"E
19-20	10	144.32	4.00	4.00	N 05°51'58" 0"E	17°56'00"	N 15°44'00" 0"E
21-22	11	144.32	2.50	2.50	N 05°51'58" 0"E	17°56'00"	N 15°44'00" 0"E
23-24	12	144.32	1.50	1.50	N 05°51'58" 0"E	17°56'00"	N 15°44'00" 0"E
25-26	13	144.32	0.90	0.90	N 05°51'58" 0"E	17°56'00"	N 15°44'00" 0"E
27-28	14	144.32	0.50	0.50	N 05°51'58" 0"E	17°56'00"	N 15°44'00" 0"E
29-30	15	144.32	0.30	0.30	N 05°51'58" 0"E	17°56'00"	N 15°44'00" 0"E
31-32	16	144.32	0.20	0.20	N 05°51'58" 0"E	17°56'00"	N 15°44'00" 0"E
33-34	17	144.32	0.15	0.15	N 05°51'58" 0"E	17°56'00"	N 15°44'00" 0"E
35-36	18	144.32	0.10	0.10	N 05°51'58" 0"E	17°56'00"	N 15°44'00" 0"E
37-38	19	144.32	0.07	0.07	N 05°51'58" 0"E	17°56'00"	N 15°44'00" 0"E
39-40	20	144.32	0.05	0.05	N 05°51'58" 0"E	17°56'00"	N 15°44'00" 0"E
41-42	21	144.32	0.03	0.03	N 05°51'58" 0"E	17°56'00"	N 15°44'00" 0"E
43-44	22	144.32	0.02	0.02	N 05°51'58" 0"E	17°56'00"	N 15°44'00" 0"E
45-46	23	144.32	0.01	0.01	N 05°51'58" 0"E	17°56'00"	N 15°44'00" 0"E



MONUMENTS
 - 6" x 6" iron pipe, 1/2" diameter, 1/2" thick, 1/2" long
 - 4" x 4" iron pipe, 1/2" diameter, 1/2" thick, 1/2" long
 - 2" x 2" iron pipe, 1/2" diameter, 1/2" thick, 1/2" long

NOTE ALL UNDER MONUMENTS MUST BE MADE BY THE SURVEYOR AND WITNESSED BY A JURY

STATE OF WISCONSIN
 COUNTY OF DUNN
 I, GLADYS FALLER, BEING THE DULY APPOINTED, QUALIFIED AND ACTIVE TOWN TREASURER OF THE TOWN OF RED CEDAR, DO HEREBY CERTIFY THAT THE RECORDS IN MY OFFICE REFLECTING THE SAID AND UNPLATTED LANDS ARE CORRECT AND COMPLETE AS OF THE DATE HEREIN SPECIFIED.

TOWN BOARD RESOLUTION
 RESOLVED AS THE TOWN BOARD OF THE TOWN OF RED CEDAR, THAT THE PLAT OF PARK RAPIDS ADDITION TO THE TOWN OF RED CEDAR AS SHOWN HEREIN IS ACCEPTED.

APPROVED: [Signature] (DATE)
 SIGNED: [Signature] TOWN CLERK

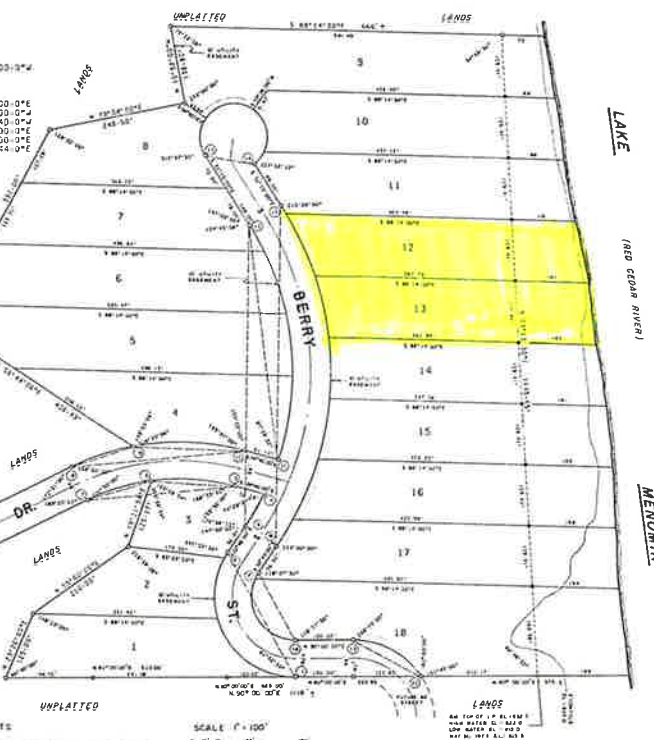
CITY COUNCIL RESOLUTION
 RESOLVED THAT THE PLAT OF PARK RAPIDS ADDITION TO THE TOWN OF RED CEDAR IS HEREBY APPROVED BY THE COMMON COUNCIL OF THE CITY OF MENOMINIE.

I HEREBY CERTIFY THAT THE FOREGOING IS A TRUE AND CORRECT COPY OF THE RESOLUTION PASSED BY THE COMMON COUNCIL OF THE CITY OF MENOMINIE.

[Signature] (DATE)
 SIGNED: [Signature] CITY CLERK

REGISTER'S OFFICE
 305507
 STATE OF WISCONSIN
 DUNN COUNTY
 I HEREBY CERTIFY THAT THIS PLAT IS IN ACCORDANCE WITH SECTION 10.0 OF THE DUNN COUNTY PLANNING ACT AND IS HEREBY RECORDED.

RECORDED BY: [Signature]
 DATE: [Date]



STATE OF WISCONSIN
 COUNTY OF DUNN
 I, DOROTHY BOGAC, BEING THE DULY APPOINTED, QUALIFIED AND ACTIVE TOWN TREASURER OF THE TOWN OF RED CEDAR, DO HEREBY CERTIFY THAT IN ACCORDANCE WITH THE RECORDS IN MY OFFICE, THERE ARE NO UNPLATTED LANDS OR UNRECORDED INTERESTS IN ANY OF THE LANDS INCLUDED IN THIS PLAT OF PARK RAPIDS ADDITION.

[Signature]
 COUNTY TREASURER'S PARTICIPATE

CITY COUNCIL RESOLUTION
 RESOLVED THAT THE PLAT OF PARK RAPIDS ADDITION TO THE TOWN OF RED CEDAR IS HEREBY APPROVED BY THE COMMON COUNCIL OF THE CITY OF MENOMINIE.

I HEREBY CERTIFY THAT THE FOREGOING IS A TRUE AND CORRECT COPY OF THE RESOLUTION PASSED BY THE COMMON COUNCIL OF THE CITY OF MENOMINIE.

[Signature] (DATE)
 SIGNED: [Signature] CITY CLERK

REGISTER'S OFFICE
 305507
 STATE OF WISCONSIN
 DUNN COUNTY
 I HEREBY CERTIFY THAT THIS PLAT IS IN ACCORDANCE WITH SECTION 10.0 OF THE DUNN COUNTY PLANNING ACT AND IS HEREBY RECORDED.

RECORDED BY: [Signature]
 DATE: [Date]

PARK RAPIDS ADDITION
 TOWN OF RED CEDAR, DUNN CO., WIS.
 LOCATED IN
 GOVT. LOT 7, SEC. 6, T28N, R12W.